

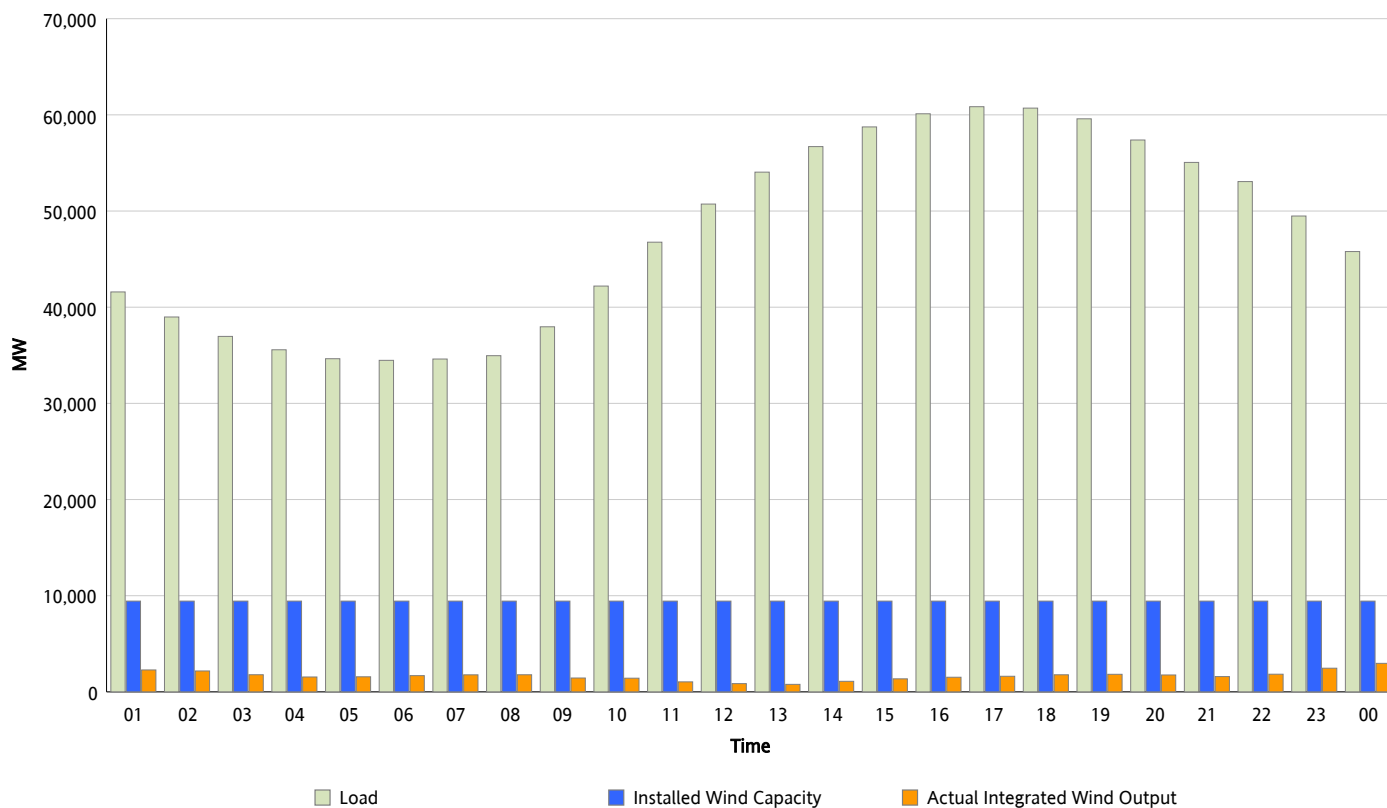


## ERCOT Grid Operations

### Wind Integration Report : 07/28/2012

Peak Load	60,851 MW
Load Peak Hour (HE)	17
Wind Over Peak	1,623 MW
Wind Record 06/19/12	8,368 MW
Max Wind Value*	3,256 MW
Wind Peak Time	23:56
Wind Integration %	7.34 %

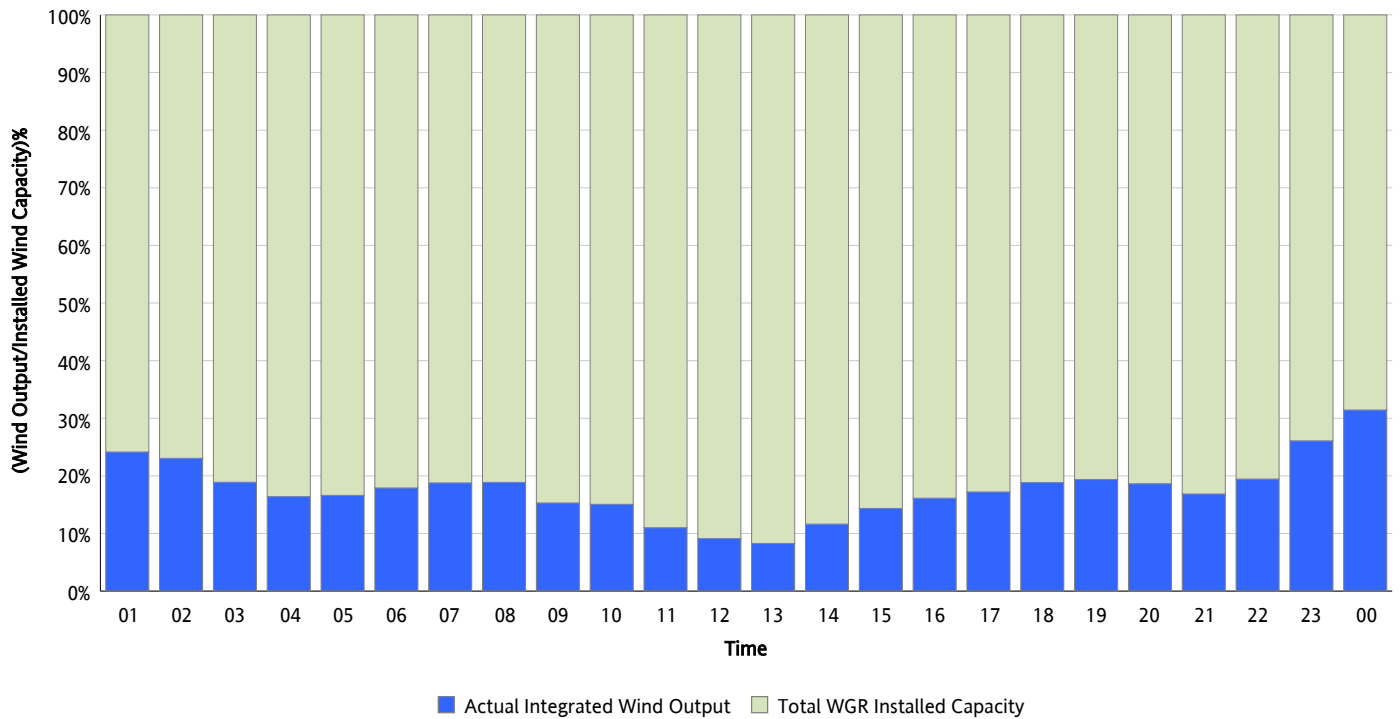
**Hourly Average Actual Load vs. Actual Wind Output**  
**07/28/2012**



*\* Wind Record and Wind Max represent instantaneous values and the rest of the values are integrated over the hour*

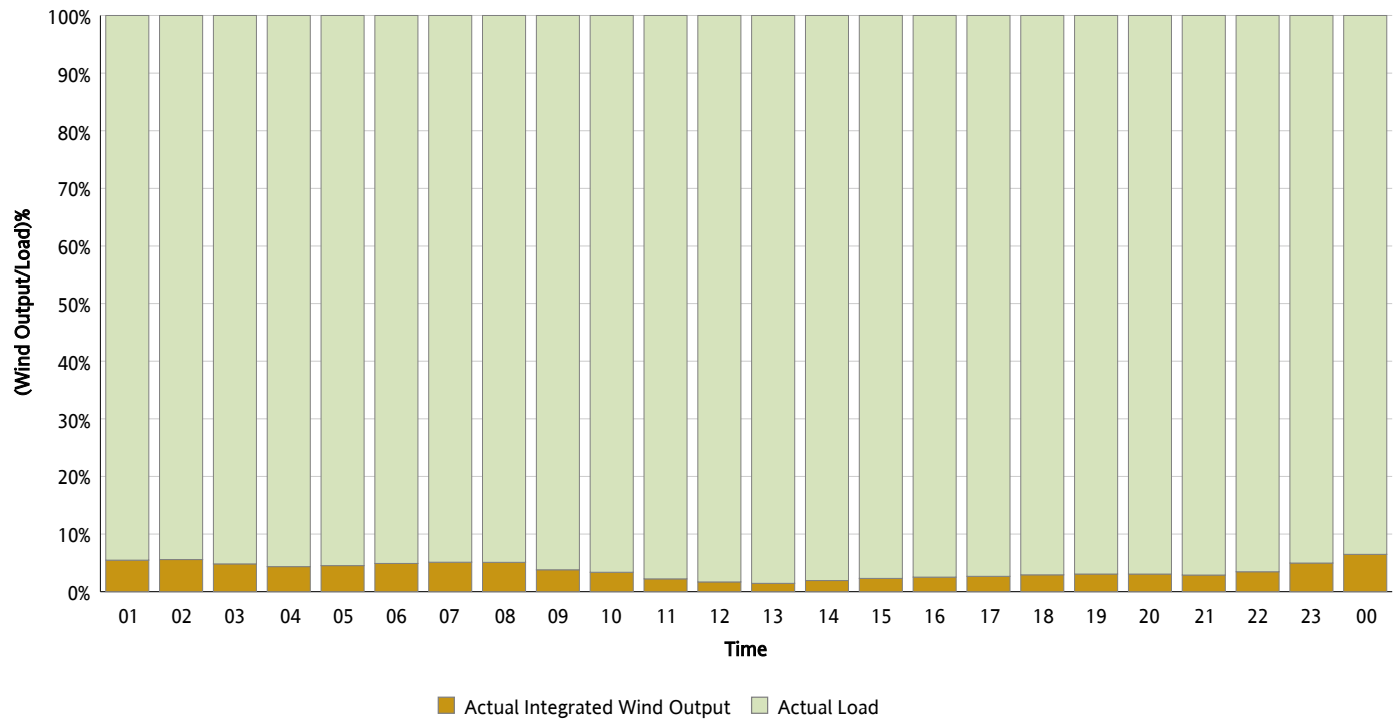
## Actual Wind Output as a Percentage of the Total Installed Wind Capacity

07/28/2012



## Actual Wind Output as a Percentage of the ERCOT Load

07/28/2012



## ERCOT Load vs. Actual Wind Output

07/21/2012 - 07/28/2012

